

TaeWoong
M E D I C A L 

RESEARCH SERVICE

**Technical
support**

Taewoong Medical research service

1. Customized animal testing and workshop service that fit a researcher's purpose.
– Mice, Rat, Rabbit, Dog, Pig.
2. Pathologic diagnosis and histomorphometric image analysis service through the production of high quality tissue slides.
3. Image assay service including SEM, Micro-CT and Medical illustration.
4. Compatibility evaluation service for various biomaterials.

Animal laboratory facilities

Taewoong Medical Osong Research Institute provide customized animal testing environments for Taewoong Medical users through the mutual cooperation.



- Animal efficacy evaluation (AAALAC)
- Angiography System (large animal)
- Echocardiogram (medium and large animals)



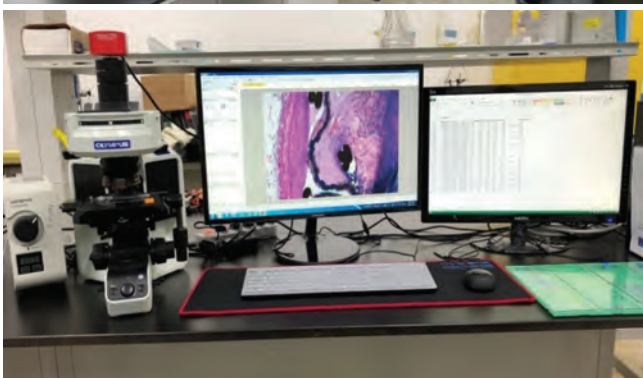
(MRI) Safety Evaluation System



Echocardiography

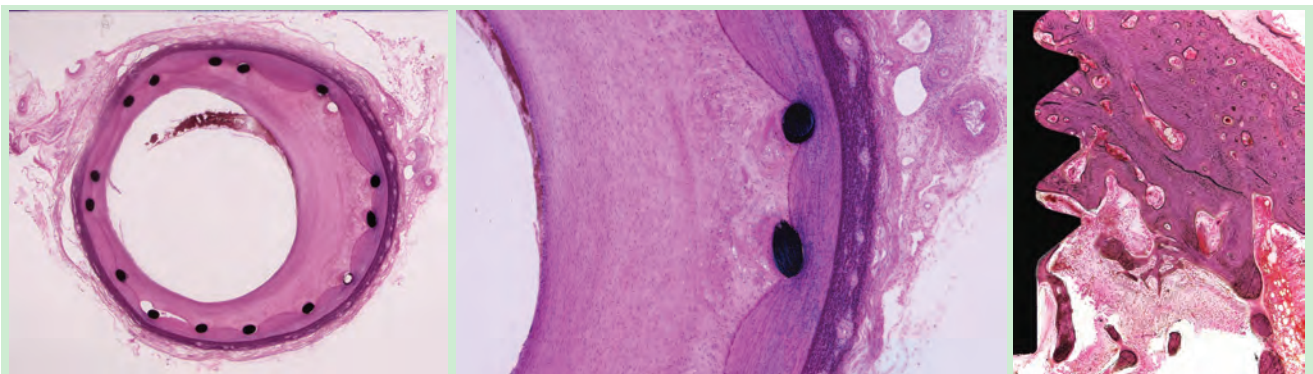
Histology laboratory in Taewoong

Histopathology-related infrastructure was established to provide hard tissue and soft tissue processing, as well as histomorphometric study services

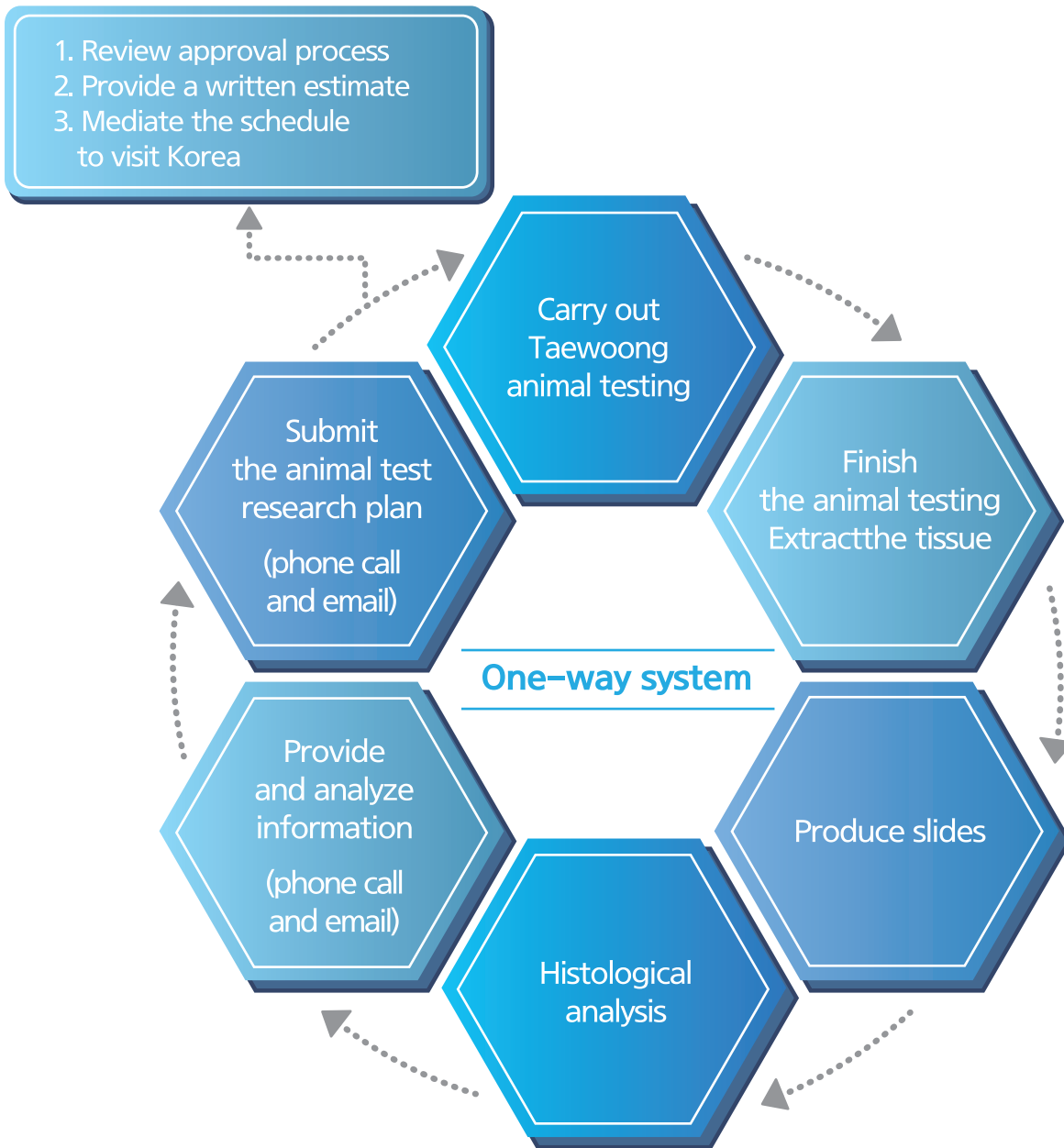


Histology evaluation service fields offered by the preclinical team

- Medical stent for various purpose
- Stent for blood vessel
- Bone Void Defects
- Dental Implant
- Cage & Spinal Fusion
- Resorption & Biodegradable Polymer
- Cadaver
- Biomaterials
- Biological Evaluation Test



Stent specimens and dental implant specimens



Chief Manager, Sanghyun Park, Ph.D

Addr : 55-7, Osongsaengmyeong-2-r, Osong-eup, Heungdeok-gu, Cheungju, Chungcheongbuk-do, Korea 363-951

Tel : +82-70-4649-1575
Fax : +82-31-996-0646
Mobile : +82-10-4731-0949
Email : shpark1@stent.net